

COSMIC JUNE

THE LARGEST ASTRONOMY AND SPACE SCIENCE SUMMER CAMP

Grades : 6 - 9

Special Attraction
Activity Kit



Ever wondered about a castle in space? The International Space Station is a castle far from Earth, orbiting in space, and a home for astronauts who research the wonders of the Universe. In this session, get an insight into the largest scientific collaborative project in history and understand its significance in space research.




International Space Station

A home for Astronauts

The night sky reveals a lot about the Universe. You must have wondered how astronomers know every constellation and recognize it practically in the night sky so easily. Start with us as an amateur astronomer and learn how to use an astronomy tool 'Planisphere' to get the hands on experience of planning night sky observation. Experience the beauty of stars and patterns with us by understanding to work on a software 'Stellarium'.

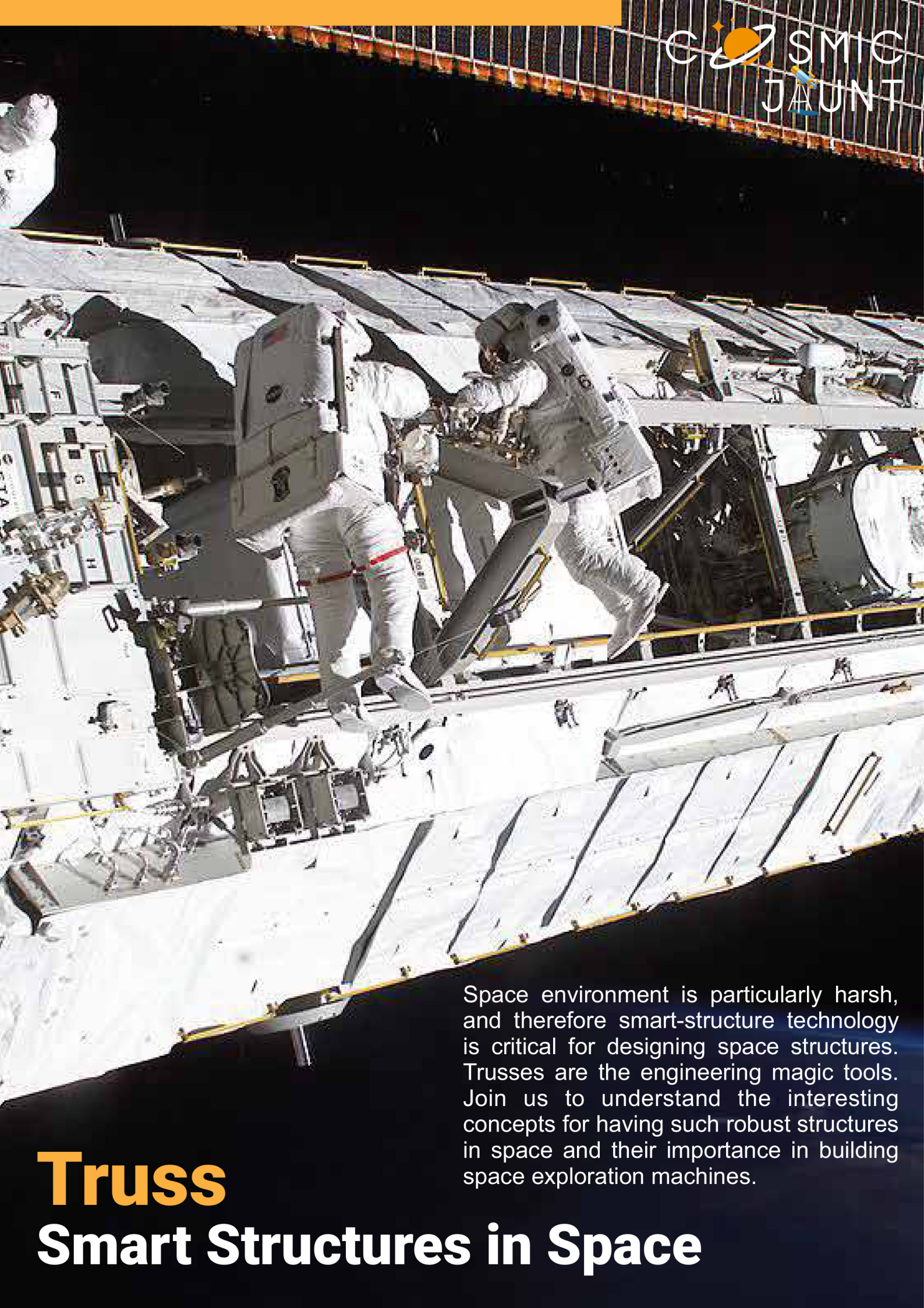
Planning

Night Sky Observation

A close-up photograph of a weathered, greenish-bronze sundial gnomon. The gnomon is a curved, triangular-shaped metal piece with a pointed tip, mounted on a circular stone dial. The dial has faint markings and a shadow cast by the gnomon. The background is a blurred field of yellow flowers.

Sundials are the oldest known instruments for telling time. Earlier, people used to track time with the day time star – the Sun. Learn and experience the magnificence of a Sundial.

**Tracking the time
through the Sundial**



Space environment is particularly harsh, and therefore smart-structure technology is critical for designing space structures. Trusses are the engineering magic tools. Join us to understand the interesting concepts for having such robust structures in space and their importance in building space exploration machines.

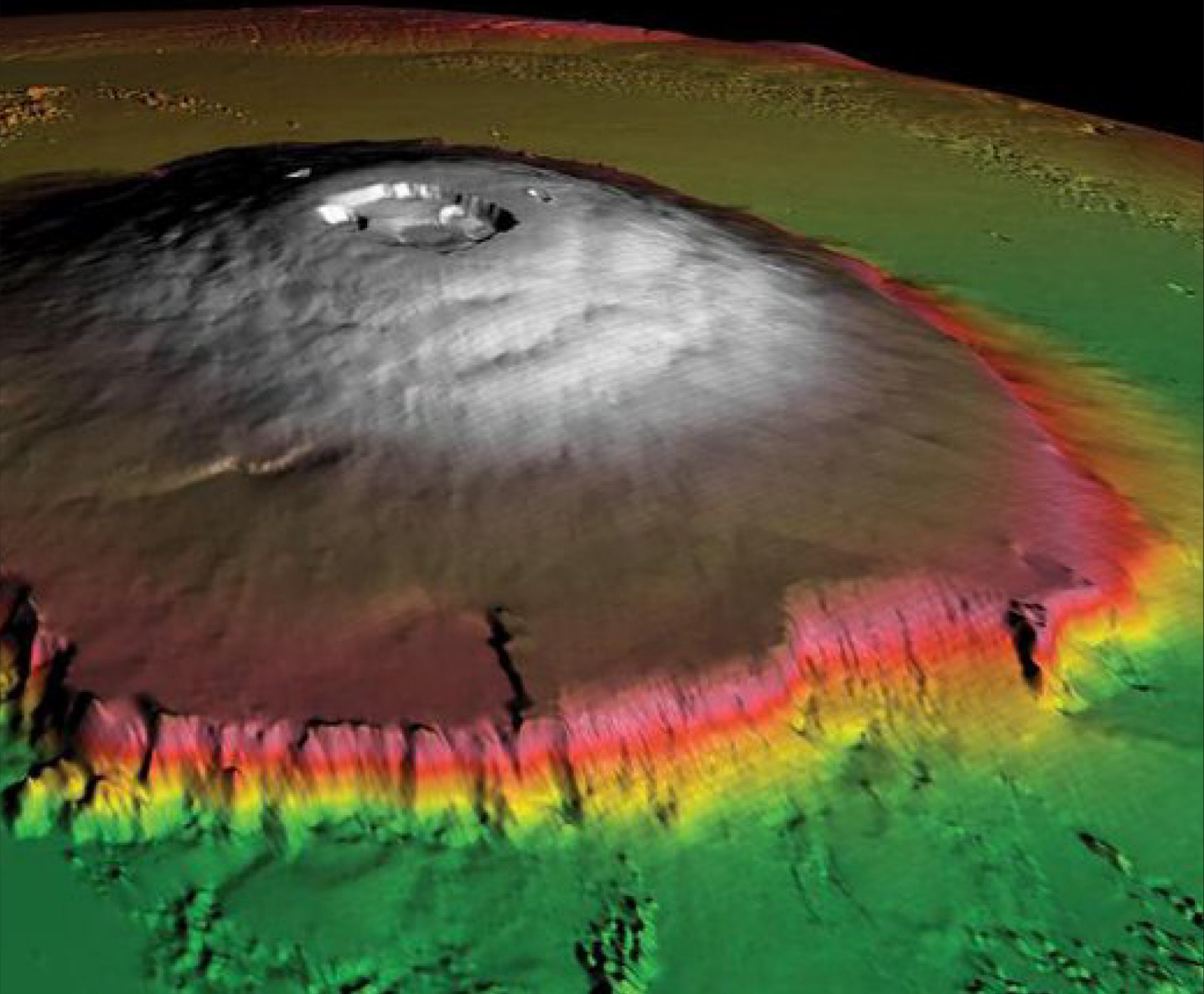
Truss

Smart Structures in Space

Space Topography

Mapping The Surface Of Celestial Bodies

Space missions are difficult tasks. How do you think scientists know where to land on Mars or Moon? They are equipped with special type of maps called Topographical maps. This session gives you an in-depth learning about topography, contour drawing, conversion to 3D maps; and how such maps help in getting a better understanding of the celestial surface.





Session Highlights


- Engagement Mode - Online
- Batch size - 30 kids
- 90 min/ 5days
- Registered students will receive activity Kit


Workshop Composition

- Concept understanding
- Hands on Activity
- Interactive Quiz


Connect with us at :

 www.stemandspace.com

 +91-850695554/7

 cj@stemandspace.com

 /STEMandSpace

 /stemnspace

